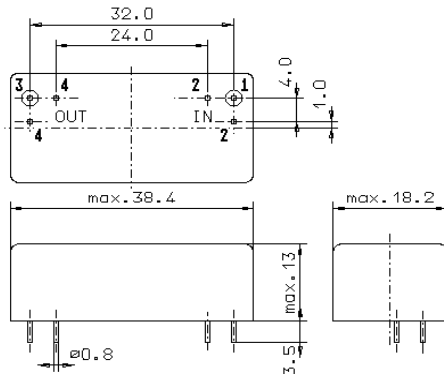


Specification for monolithic crystal filter:

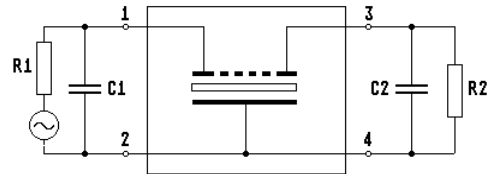
MQF 10.7-0300/11

1. General

1.1. Package:



GM17



- | | |
|-----------------------------------|------------------|
| 1.2. Type name: | MQF 10.7-0300/11 |
| 1.3. Number of poles: | 6 |
| 1.4. Operating temperature range: | 0°C to +50°C |
| 1.5. Storage temperature range: | -25°C to +85°C |

2. Electric values

- | | |
|---|---|
| 2.1. Nominal centre frequency fo: | 10.7 MHz |
| 2.2. Pass band | |
| 2.2.1. Centre frequency fc: | 10.7 MHz ± 400 Hz |
| 2.2.2. Bandwidth between 3 dB - frequencies: | ≥ fc ± 1.35 kHz
≤ fc ± 1.65 kHz |
| 2.2.3. Ripple (at fc ± 0.75 kHz): | ≤ 0.5 dB |
| 2.3.4. Phase difference for pairs at fc (Δφc): | ≤ 12° |
| 2.2.5. Phase tracking for pairs referred back to Δφc : | ≤ 6° at fc ± 1.2 kHz (i.e. Δφ ≤ 6° + Δφc) |
| 2.3.6. Reflection loss (at fc ± 1.35 kHz): | ≥ 9.55 dB (i.e. VSWR < 2) |
| 2.2.7. Insertion loss:
(measured on smallest attenuation in pass band) | ≤ 5.0 dB |
| 2.3. Stop band | |
| 2.3.1. fo ± 7.5 kHz | ≥ 60 dB |
| 2.3.2. Alternate attenuation: | ≥ 80 dB (except spurious) |
| 2.4. Terminating impedance (input and output): | 50 Ω // 0 pF |
| 3. Marking: | manufacturer, date code
MQF 10.7-0300/11 |
| 4. Environment conditions: | Corresponding to Vectron CF001 |

Edited by: _____ date: _____ name: _____